



Layers and Views

Speaker Notes



**INSIGHT
AND
OVERVIEW**

List of topics

- What is a layer?
- What is a view?
- Using views in Supervise
- Creating layers in Definition
- Creating views in Definition
- Controlling views from the PLC

What is a layer?

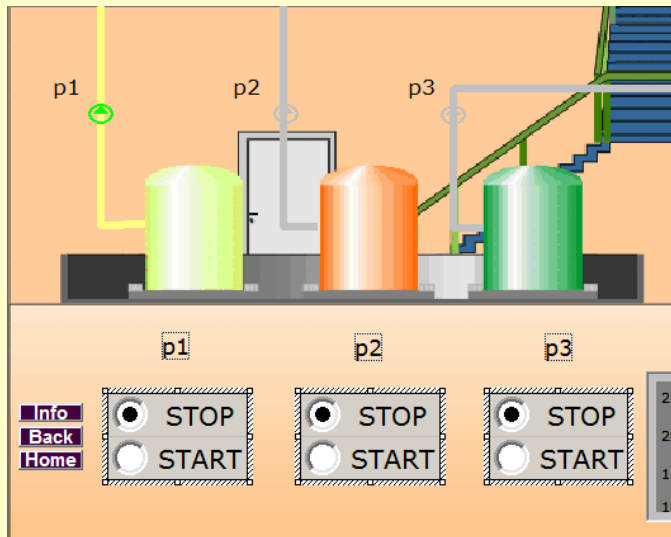
A layer is a display tier on an IGSS diagram.

Each descriptor, object value and object name can be a member of one or more layers.

A layer can be a member of one or more views.

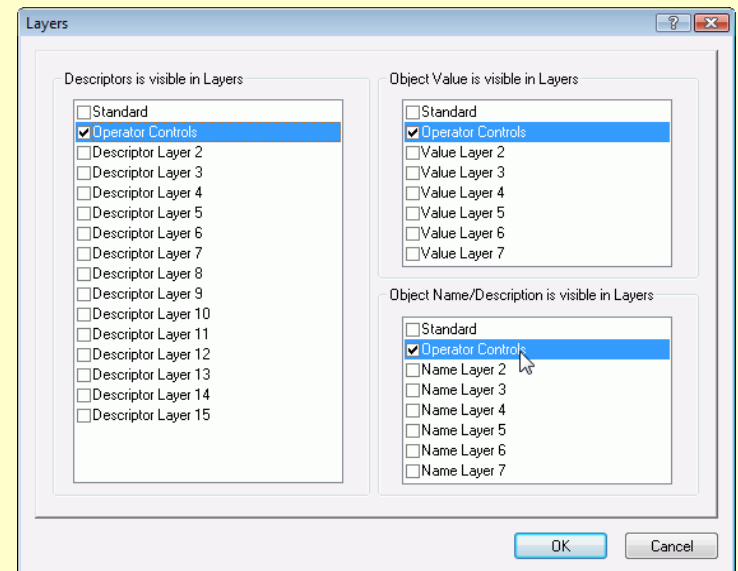
STEP 1:

Select the descriptors, names and values



STEP 2:

Assign them to the relevant layers.



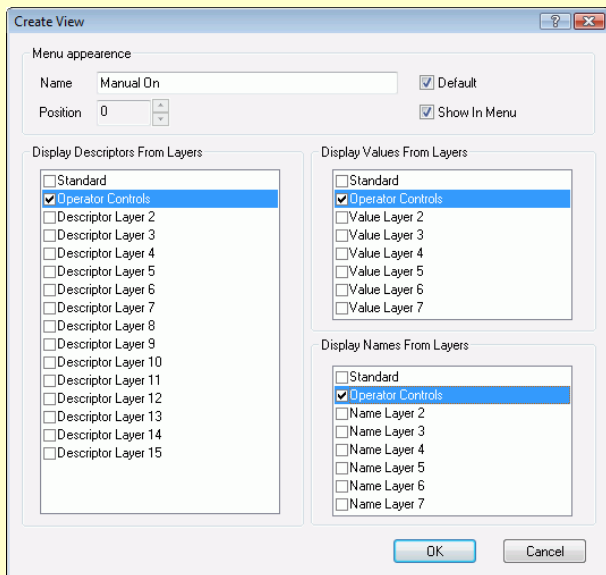
What is a view?

A view activates one or more layers on an IGSS diagram.

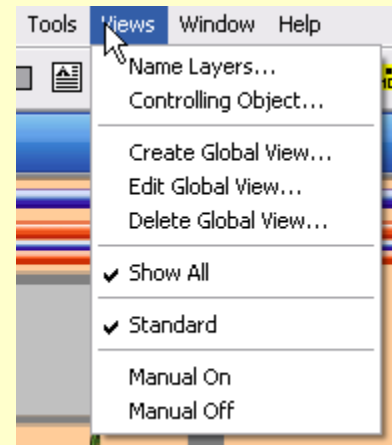
A view can be global or specific for a diagram.

A view can be activated manually from the **Views** menu or automatically by a controlling digital object (or via VBA code).

STEP 1: Create the view and select the layers.



STEP 2: Test the views from the Views menu (DEF)



Using views in Supervise

1. Go to **News in IGSS V8.**
2. Explain the buttons in the left pane and the **Views** menu.
3. Click on the **View Example of Layers** button.
4. Explain the Auto/Manual switching and tell that we will show this example in **Definition.**



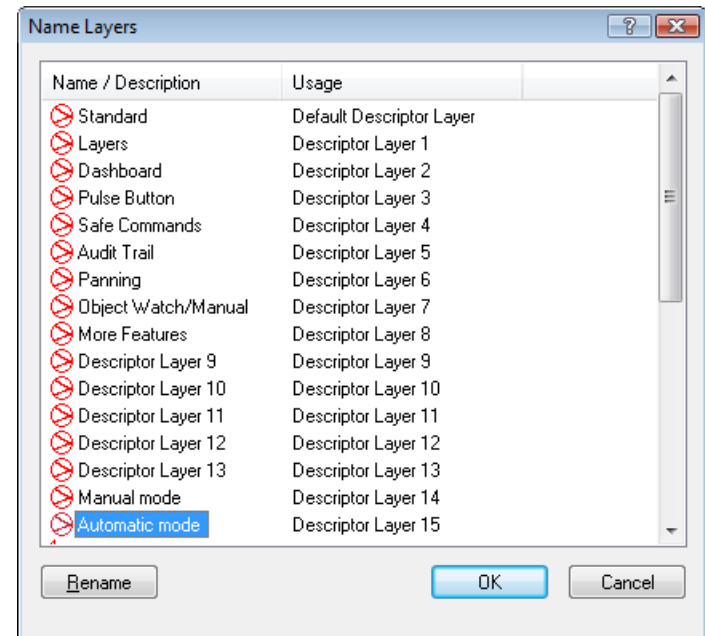
The screenshot shows the Supervise application window. The menu bar includes File, Edit, View, User Programs, Area, Diagram, Graph, Tools, Server, Views, Window, and Help. The Views menu is open, showing options: Standard (checked), Layers, Dashboard, Pulse Button, Safe Commands, Audit Trail, Panning, Object Watch (checked), and More Features. Below the menu, a window titled '(Global) News in Version 8.0' displays the IGSS logo and a table of new features.

New Features in IGSS V8	
Layers	Safe Commands
Dashboard	Object Watch
Audit Trail	Pulse Button
Panning	More Features

Object Watch
The Object Watch gives Any atom (tag) in IGSS top of your currently monitored objects added to the list. The objects on your monitor as shown in the illustration.

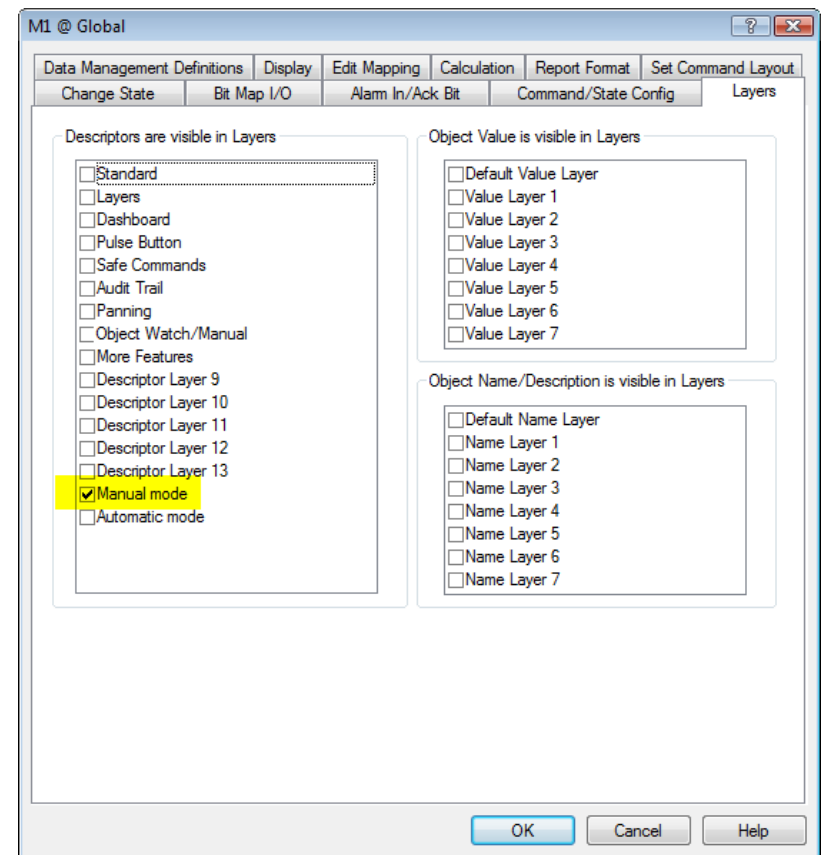
Create and name layers

1. Open the **Definition** module.
2. For this example, we need only one layer – Manual.
3. In the **Views** menu, select **Name Layers**.
4. Rename **Descriptor Layer 14** to **Manual mode**.
5. We will apply this layer to the Start/Stop button.



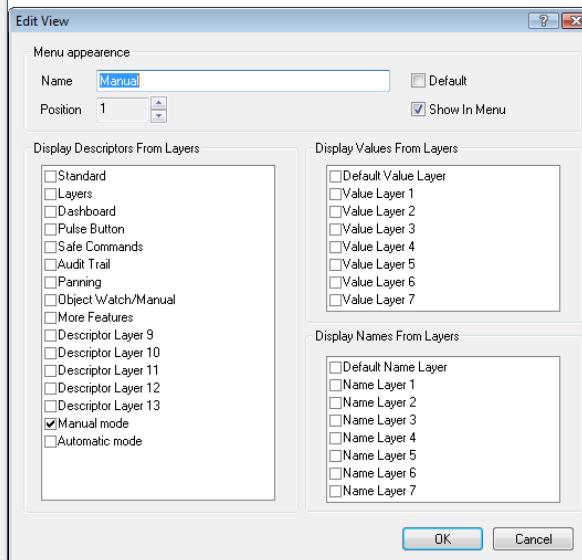
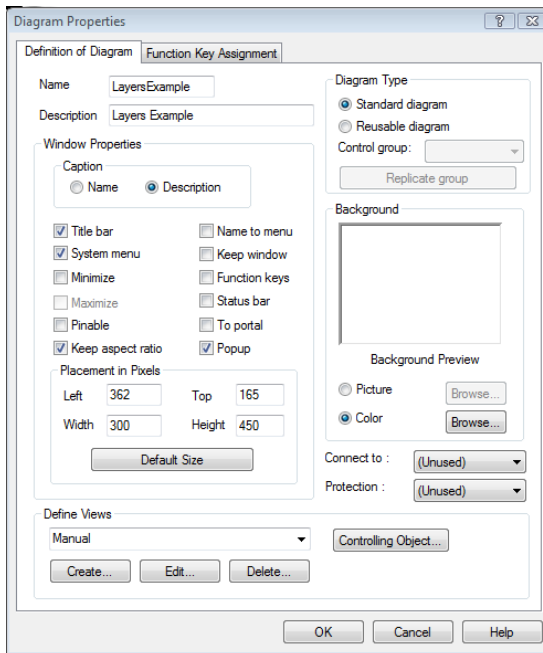
Apply layers to the diagram

1. Right-click the **Start/Stop** button and select **Properties**.
2. Click the **Layers** tab.
3. The **Manual mode** layer is selected.



Creating diagram views

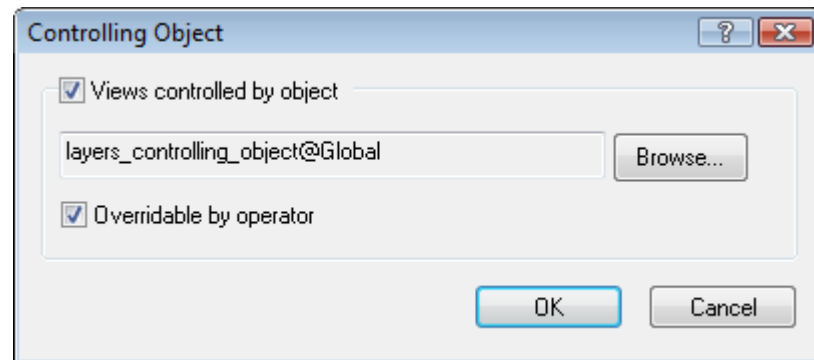
1. Right-click the **Layers example** diagram and select **Properties**.
2. Under **Define Views**, select **Manual** and click **Edit**.
3. This setting means that the Start/Stop button will only be shown in Manual mode.



Controlling views from PLC or VBA

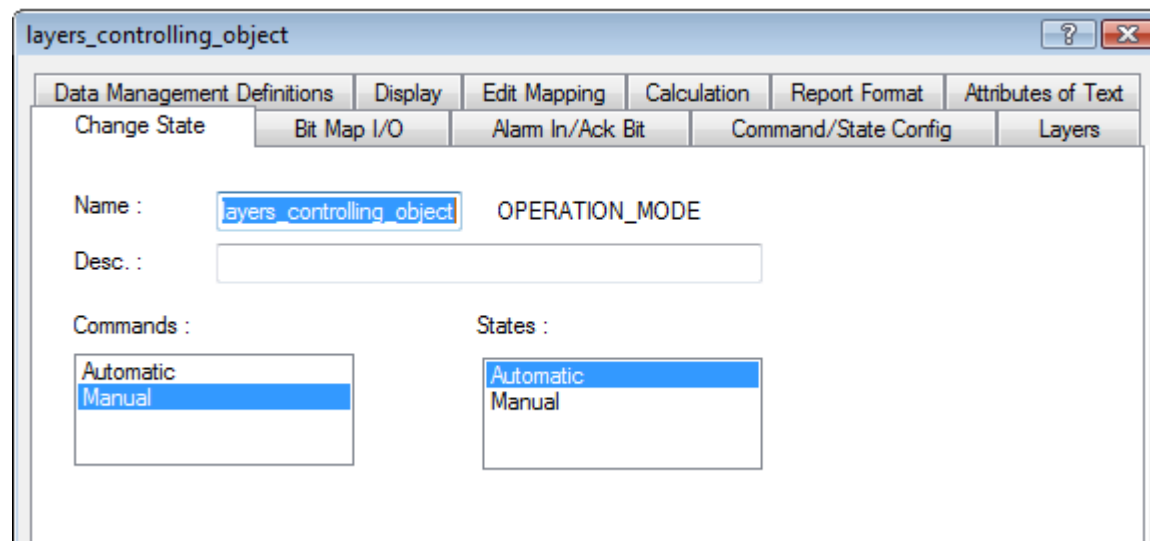
1. In the **Diagram Properties** dialog box, click the **Controlling Object** button.
2. The digital object, **Layers_controlling_object**, controls the current view.
3. However, the operator can override the current view.

If you do not want operators to interfere, simply clear the Overridable by operator check box.



Show the controlling object

1. Right-click the Manual / Automatic button and select Properties.
2. Go to the Change State tab.
3. Two states with the same names as the view.
4. The object is based on the template OPERATION_MODE.



Further information

1. Please do the exercise.
2. Refer to the Definition Help file.

