



Layers and Views



**INSIGHT
AND
OVERVIEW**

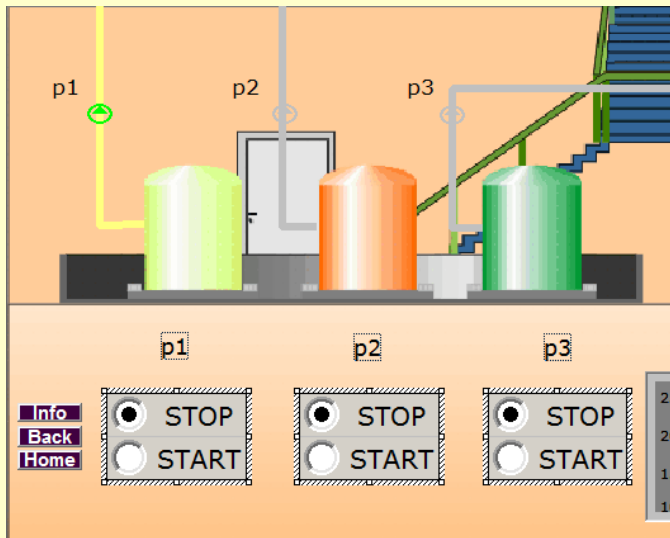
What is a layer?

Definition

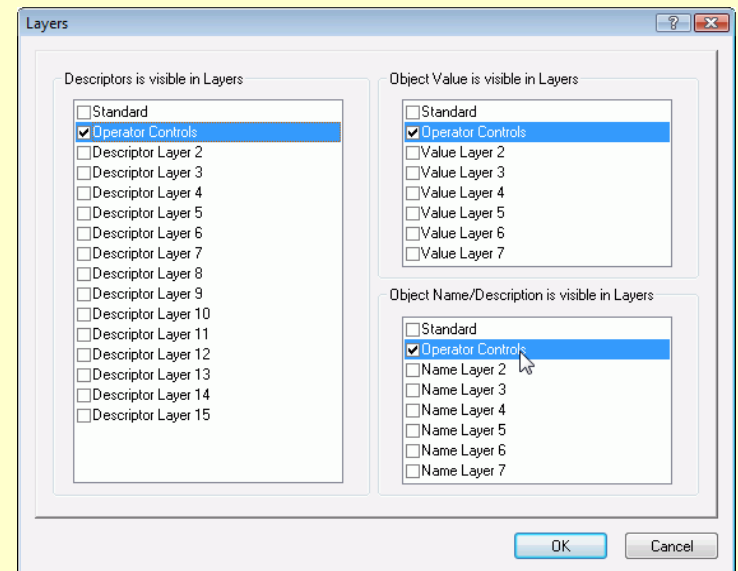
A layer is a display tier on an IGSS diagram. Each descriptor, object value and object name can be a member of one or more layers.

IGSS provides 32 different layers - 16 for descriptors, 8 for object names and 8 for object values. A layer can be a member of one or more views.

STEP 1:
Select the descriptors, names and values



STEP 2:
Assign them to the relevant layers.



What is a view?

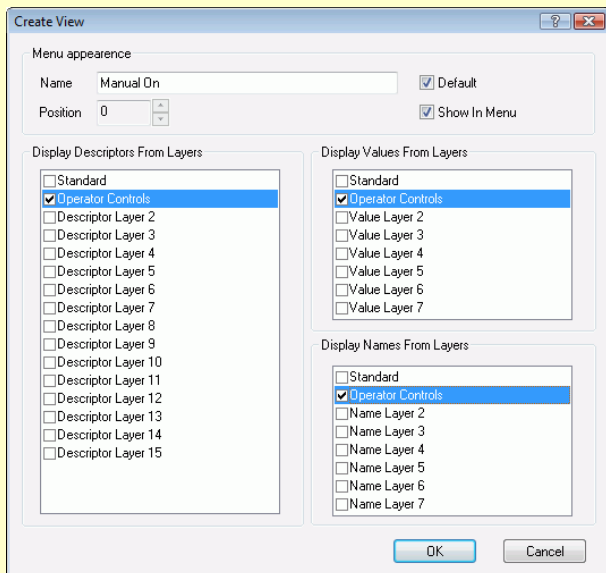
Definition

A view is display format that you can apply to an IGSS diagram. A view will show the descriptor, name and value layers enabled for this view.

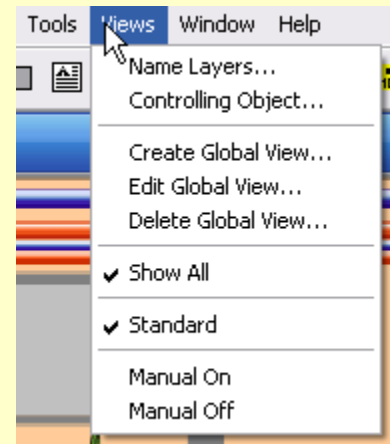
A view has a name which can be displayed in the **Views** menu of **Supervise**. If you do not want users to switch views manually, disable **Show in menu**.

A view can be activated manually from the menu or automatically by a controlling digital object (or via VBA code).

STEP 1: Create the view and select the layers.



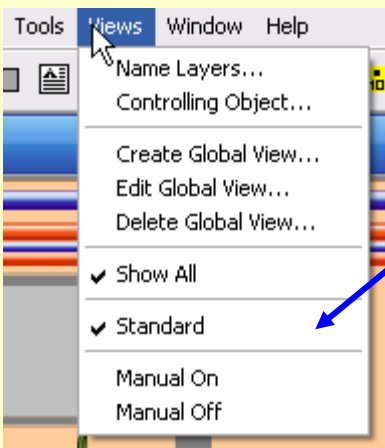
STEP 2: Test the views from the Views menu (DEF)



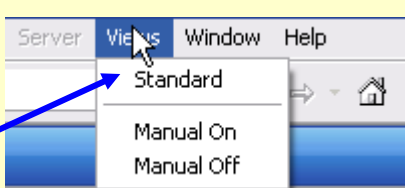
Global views

- A global view can be applied to all diagrams.
- By default, a built-in view is activated where all descriptors/names/values are members of the default layer 0.
- A global view may be used for showing/hiding all descriptors.
- A global view may be used for showing a normal operation view and a view for emergency situations.
- A global view may be used for showing information which is only relevant for specific operations, for example, Maintenance tags for objects.

Definition

A screenshot of the 'Views' menu in the 'Definition' window. The menu is open, showing options: Name Layers..., Controlling Object..., Create Global View..., Edit Global View..., Delete Global View..., Show All (checked), Standard (checked), Manual On, and Manual Off. A blue arrow points from the text 'Name of global view' to the 'Standard' option.

Supervise

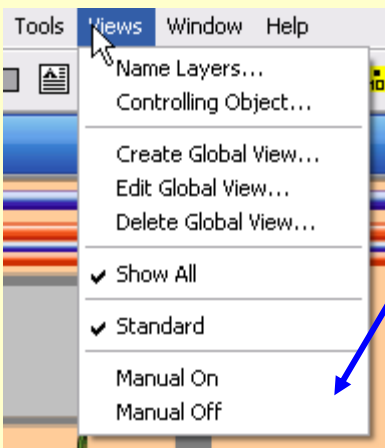
A screenshot of the 'Views' menu in the 'Supervise' window. The menu is open, showing options: Standard, Manual On, and Manual Off. A blue arrow points from the text 'Name of global view' to the 'Standard' option.

Name of global view

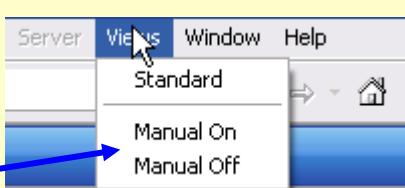
Diagram views

- A diagram view can be applied to the diagram where it was defined.
- A diagram view can be combined with a global view.
- The user activates a diagram view from the **Views** menu or the view is automatically activated by the PLC (or via VBA code).
- Diagram views are defined from the **Diagram Properties** dialog box.
- In this example, the diagram can run in Manual On or Manual Off views.

Definition



Supervise

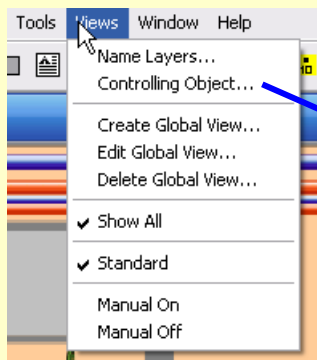


Name of diagram views

Controlling object

- A controlling object is a digital object which can activate either a global or a diagram view.
- The current state of the object activates the corresponding view.
***Example:** If the state of the controlling object, *ViewControl1*, is 0, it activates Manual On (state 0). If it is 1, it activates Manual Off (state 1).*
- If **Overridable by operator** is enabled, the user can manually switch views in the **Views** menu.

Global views



Controlling object

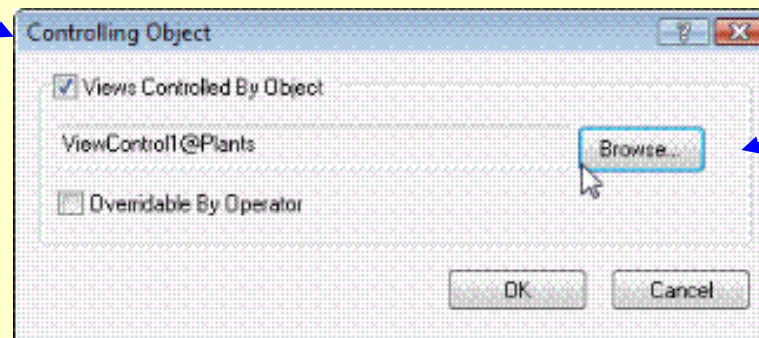
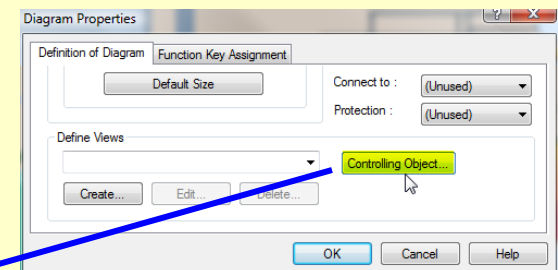


Diagram views



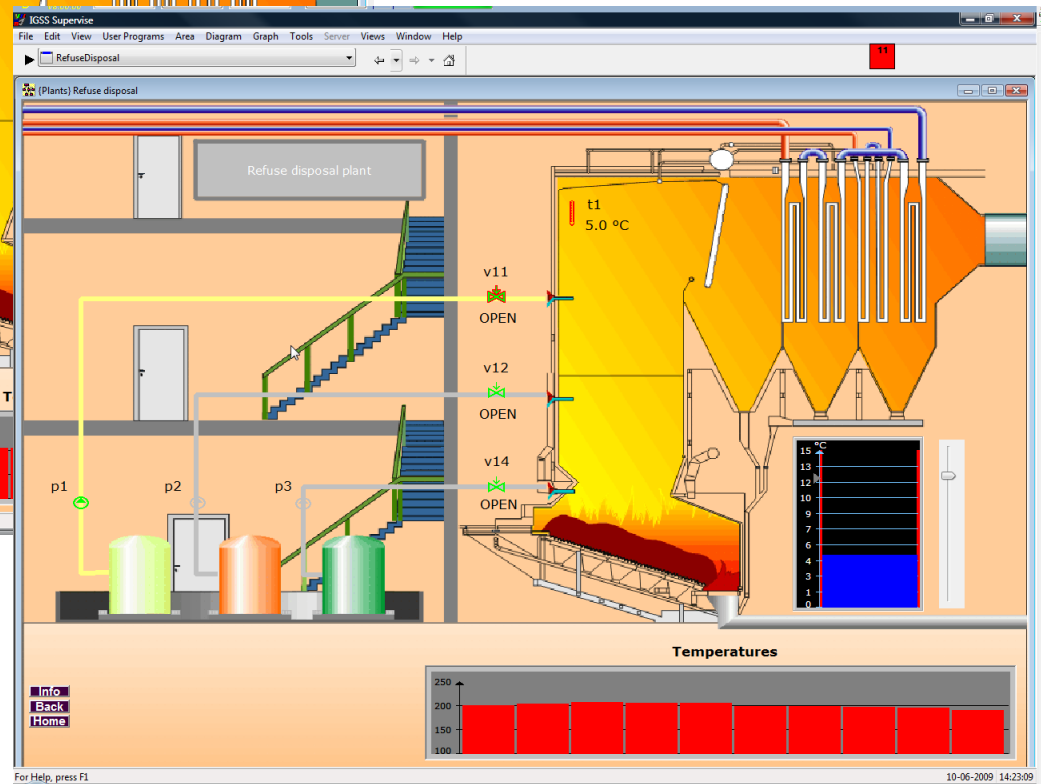
Example 1: Manual On/Manual Off diagram views



Manual On – Stop/Start buttons displayed



Manual Off – Stop/Start buttons hidden

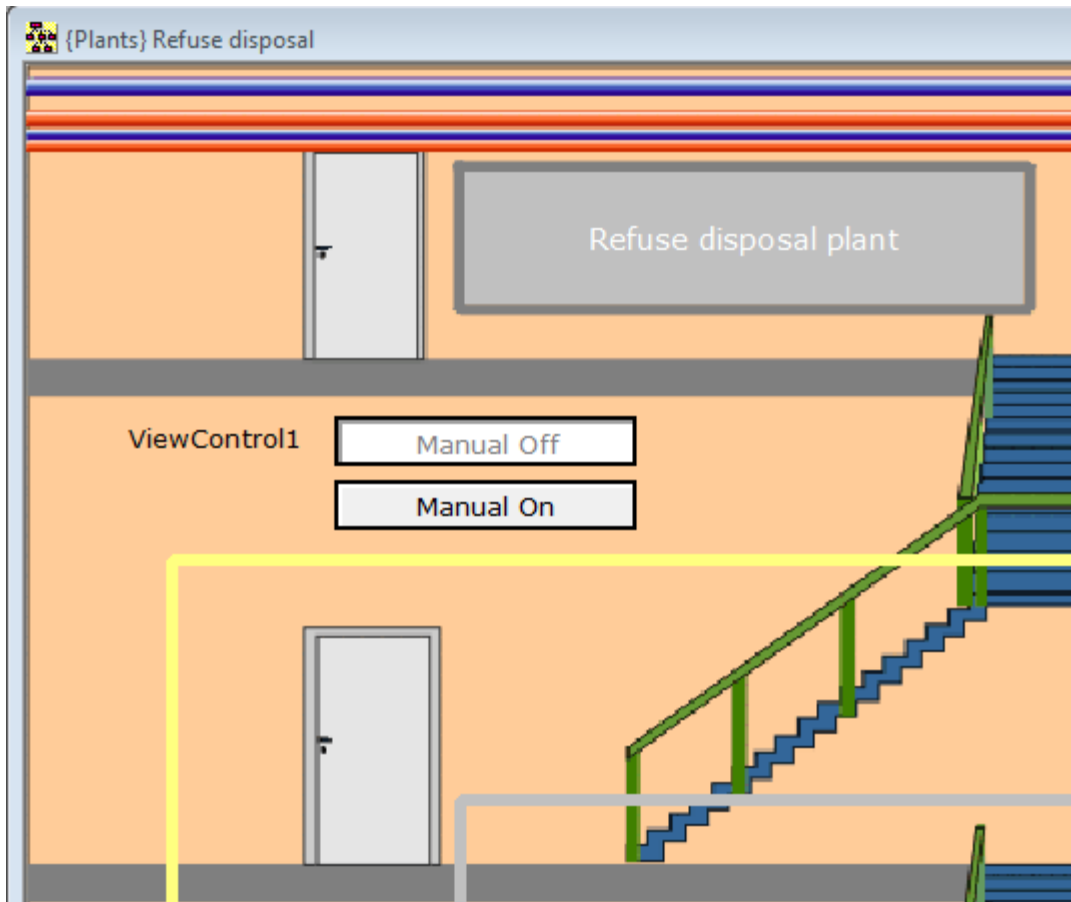


Example 1 + controlling object: Manual On/Manual Off diagram views



Controlling object

The object ViewControl1 activates one of the views.



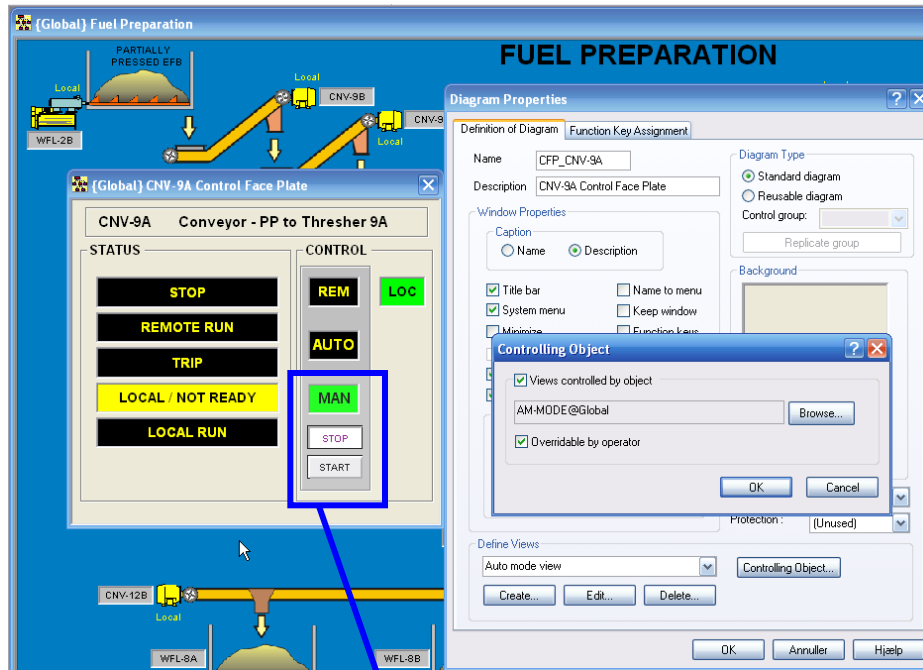
TIP:

To control the view only from the PLC, create the controlling object as an unreferenced object and disable the "Overridable by operator" option.

Example 2: Faceplate with auto/manual views

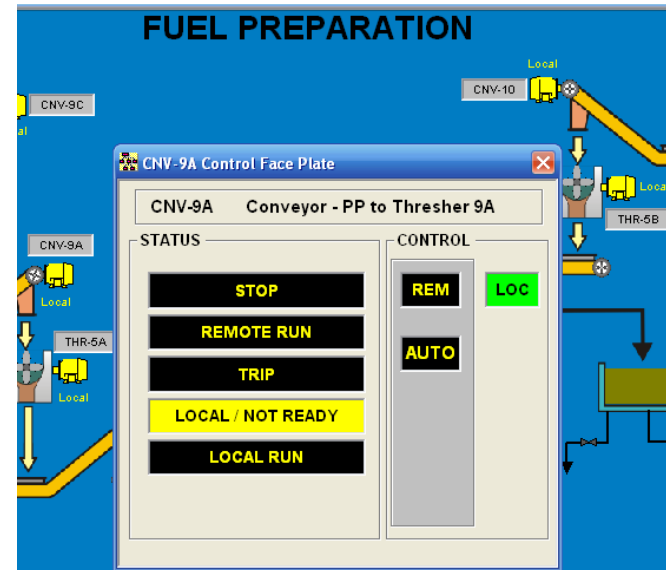
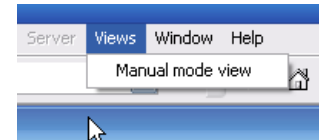


Two diagram views = Auto mode and manual mode
Controlling object = AM-MODE



The manual operator controls are hidden in Auto mode

Diagram opens by default in Auto mode.
User can switch to Manual mode from **Views** menu.



Example 3: Diagram with maintenance tags



Billede fra CBR konfig.

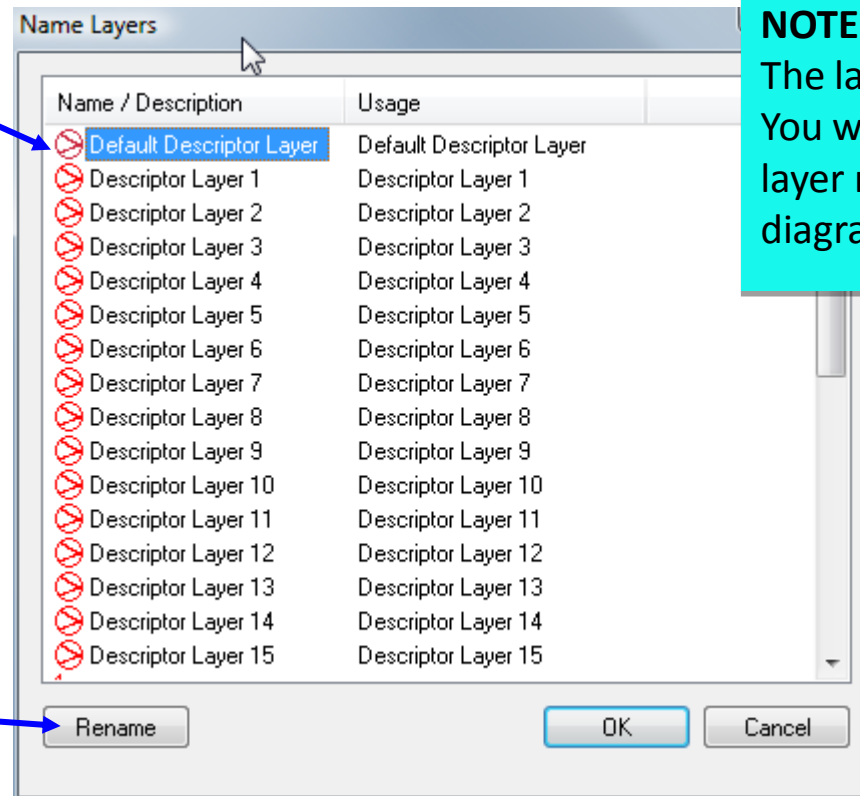
Reference and Lookup

The individual
dialogs and windows.

Name Layers



Default layer for all descriptors/names/values are activated by default



NOTE:

The layer names are global. You will be using the same layer names for global and diagram views.

Click Rename or press F2 to rename a layer.

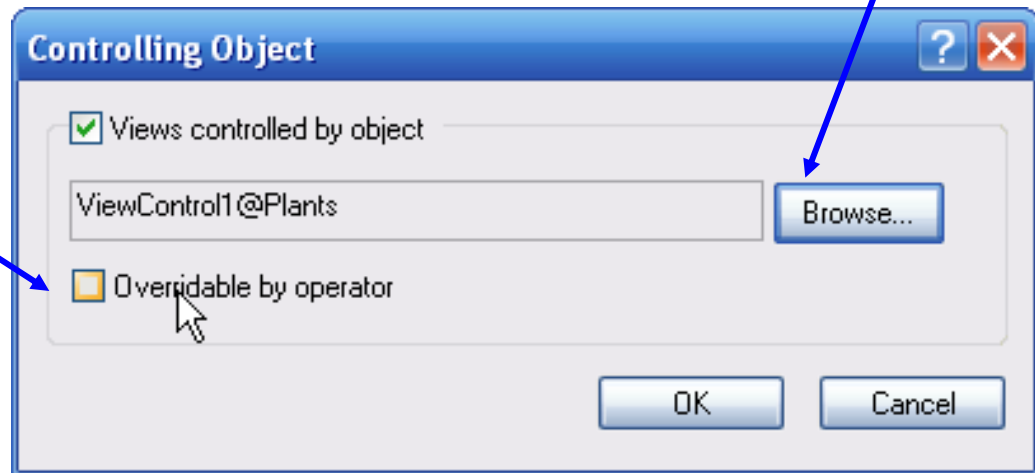
Controlling Object



Select this check box, if you want to allow users to manually Switch views in Supervise.

In that case, remember to enable "Show in menu" for each view.

Browse to find the digital object.



Create / Edit View



Name in **Views** menu

Select the layer(s) you want to show in this view.

Select **Default** to activate this view when the diagram is opened.

Select **Show in menu** for the views you want the operator to be able to access.

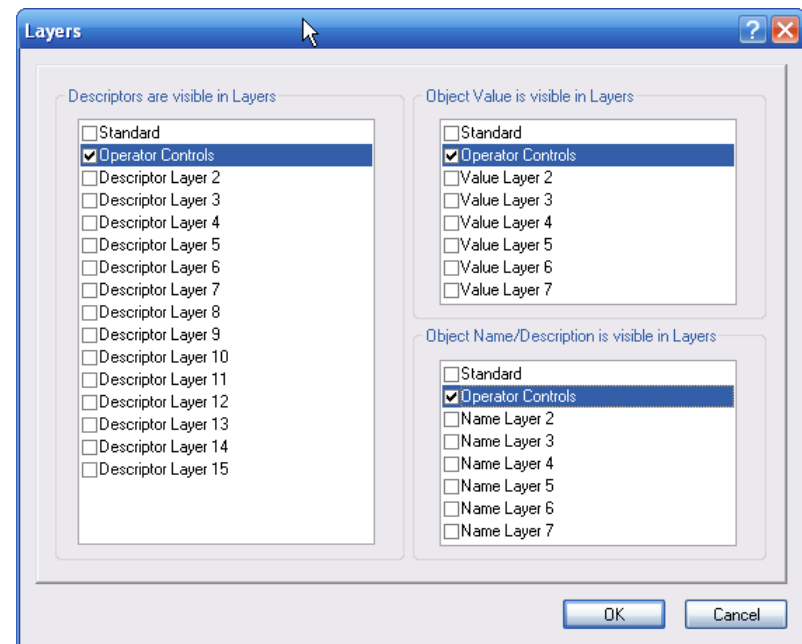
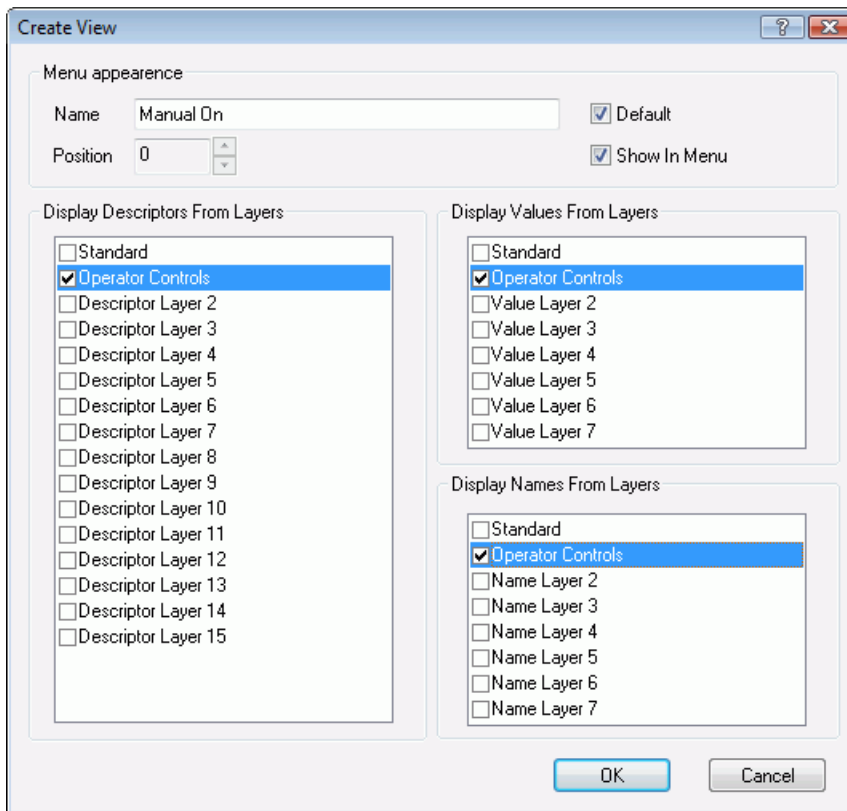
If the view is controlled by a digital object and **Overridable by operator** is disabled. The user will see the name in the **Views** menu, but cannot activate it.

Layers dialog box



Multiple descriptors/names/values selected.
Right-click and select **Layers**.

One object descriptor selected.
Right-click, **Properties** > **Layers**.



Property Table View



Set the bits here corresponding to the layers you want to activate.

The example will result in these layer settings.

Filter	Descriptor Layers	Value Layer	Name Layer	VBA enabled
Icon: t1 @ Global	0	0	0	
Icon: p1 @ Global (0)	100	1	110	
Icon: p1 @ Global (1)	0	0	0	
Icon: v11 @ Global (0)	0	0	0	
Icon: v11 @ Global (1)	0	0	0	
Icon: p2 @ Global (0)	0	0	0	
Icon: p2 @ Global (1)	0	0	0	
Icon: p3 @ Global (0)	0	0	0	
Icon: p3 @ Global (1)	0	0	0	
Icon: v14 @ Global (0)	0	0	0	
Icon: v14 @ Global (1)	0	0	0	
Icon: v12 @ Global (0)	0	0	0	
Icon: v12 @ Global (1)	0	0	0	

Descriptors are visible in Layers

- Default Descriptor Layer
- Descriptor Layer 1
- Descriptor Layer 2
- Descriptor Layer 3
- Descriptor Layer 4
- Descriptor Layer 5
- Descriptor Layer 6
- Descriptor Layer 7
- Descriptor Layer 8
- Descriptor Layer 9
- Descriptor Layer 10
- Descriptor Layer 11
- Descriptor Layer 12
- Descriptor Layer 13
- Descriptor Layer 14
- Descriptor Layer 15

Object Value is visible in Layers

- Default Value Layer
- Value Layer 1
- Value Layer 2
- Value Layer 3
- Value Layer 4
- Value Layer 5
- Value Layer 6
- Value Layer 7

Object Name/Description is visible in Layers

- Default Name Layer
- Name Layer 1
- Name Layer 2
- Name Layer 3
- Name Layer 4
- Name Layer 5
- Name Layer 6
- Name Layer 7

OK Cancel Help

VBA code with CurrentView property



Global views

Global views can be manipulated using the property *CurrentView* on the host object *Configuration*

If you get the property, it will give you the current view.

If you write the property, it will change to the specified view (view number)

The value -1 means that no view is selected

The value 0 means the first view defined, 1 means the second view

Up to the last view defined.

The sequence of views can be defined in the Views menu in Definition.

If you want to switch to *View 3*, type this VBA code:

```
Configuration.CurrentView = 3
```

Do something if *View 3* is selected

```
if (Configuration.CurrentView = 3) then
    ... do something ...
endif
```

Diagram views

VBA code for diagram views is done in the same way

Each diagram has the property *CurrentView*

The sequence of the views is the one you see in the drop-down list in the Diagram Properties

For example:

```
D_Diary_Plants.CurrentView = 3
```