



**Slide Show 17:**

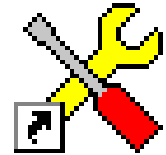
**The Maintenance Program**



**INSIGHT  
AND  
OVERVIEW**

# Overview

- [The Maintenance program](#)
- [The Maintenance list](#)
- [Create and edit maintenance jobs](#)
- [Provide maintenance instructions](#)
- [Handle maintenance alarms](#)
- [Customize the maintenance list](#)
- [Control user access](#)



Maintenance

# Maintenance program (1)

- Purpose
  - Allows users to create maintenance jobs to ensure timely maintenance on the process components
  - Show maintenance alarms to ensure that the operator or service personnel will perform the maintenance job on time

# Maintenance program (3)

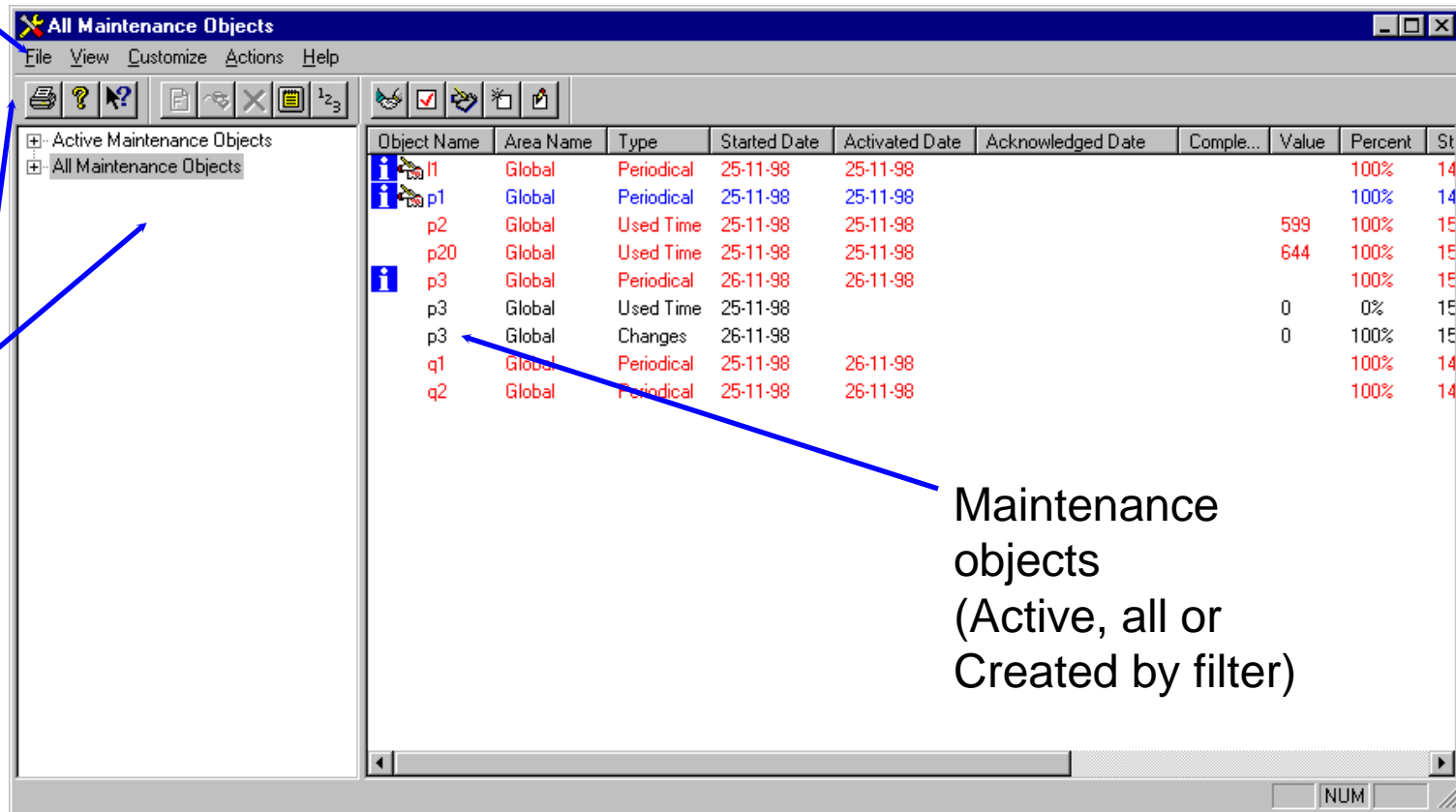
- Mnt.exe in \Gss folder
- Very similar to the Alarm List
- Configuration must be started before Maintenance can be run (as a minimum, DC)
- Maintenance configuration saved in MntDb.mdb in the report folder (SQL server also applicable)
- Alarm texts for maintenance alarms must be defined beforehand in Definition

# Maintenance list

Menu

Toolbars

Tree View



Object Name	Area Name	Type	Started Date	Activated Date	Acknowledged Date	Comple...	Value	Percent	St
i p1	Global	Periodical	25-11-98	25-11-98				100%	14
i p1	Global	Periodical	25-11-98	25-11-98				100%	14
p2	Global	Used Time	25-11-98	25-11-98			599	100%	15
p20	Global	Used Time	25-11-98	25-11-98			644	100%	15
i p3	Global	Periodical	26-11-98	26-11-98				100%	15
p3	Global	Used Time	25-11-98				0	0%	15
p3	Global	Changes	26-11-98				0	100%	15
q1	Global	Periodical	25-11-98	26-11-98				100%	14
q2	Global	Periodical	25-11-98	26-11-98				100%	14

Maintenance objects  
(Active, all or Created by filter)

# Create and edit Maintenance jobs (1)



The 'Select Object' dialog box is shown with the following settings:

- Area: Plants
- Template: PUMP\_1
- Name: p1
- Types:  Analog,  Digital,  Counter
- Maintenance Type:  Periodical,  Counter,  Used Time,  Changes

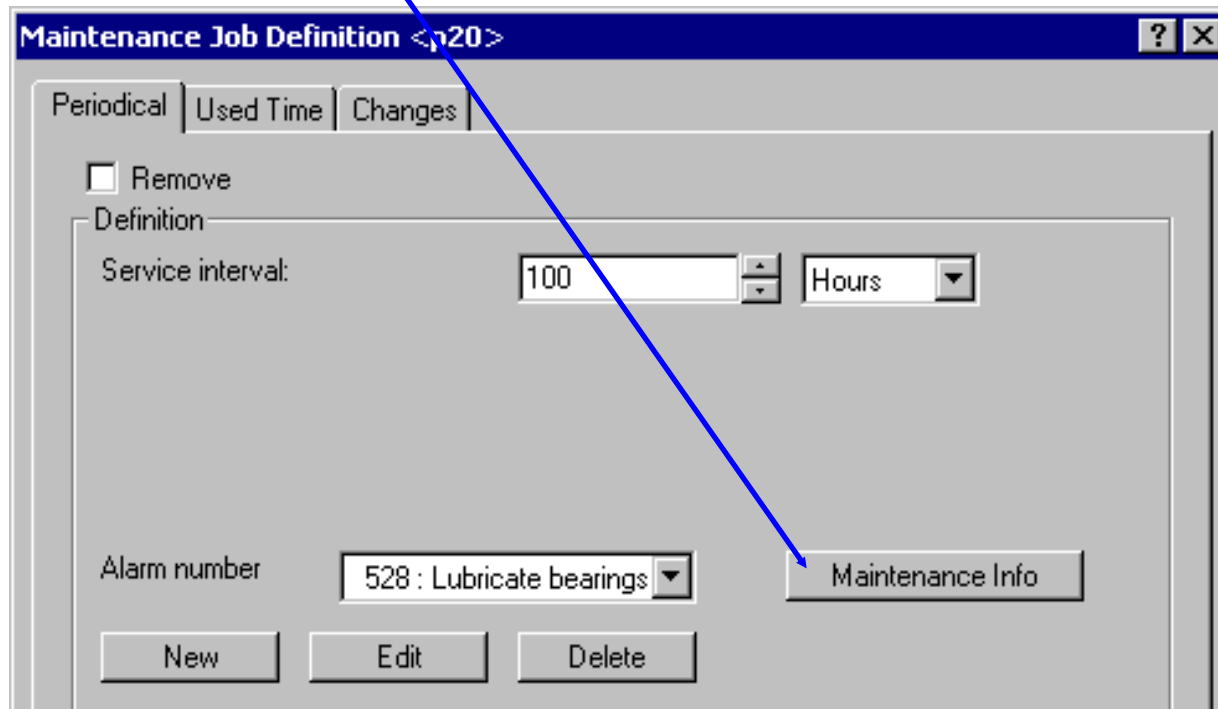
Buttons: OK, Cancel, Help

## Four types

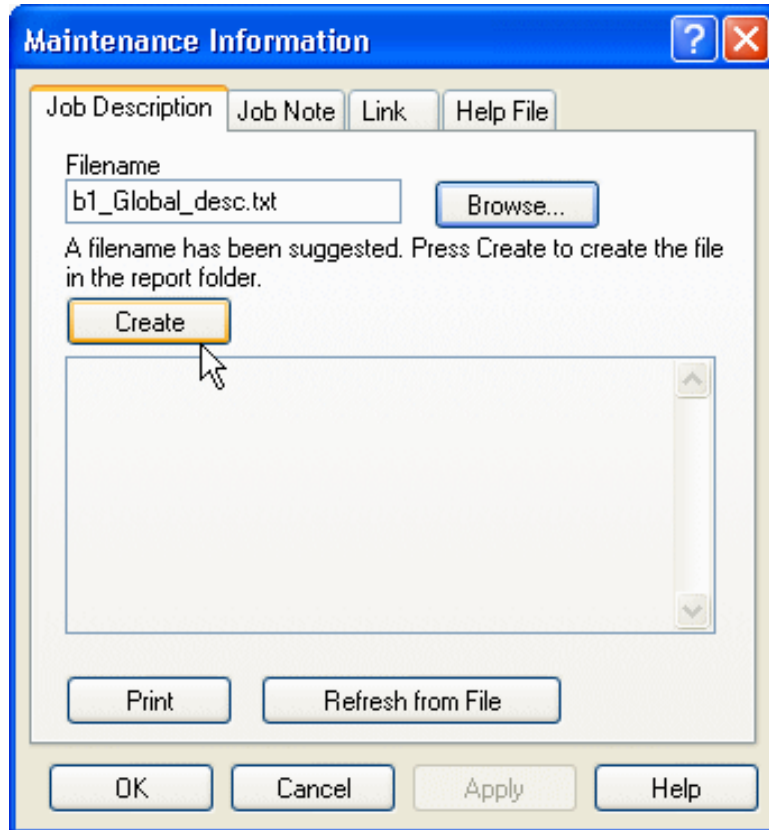
- Periodical  
(analog, digital or counter objects)
- Counter  
(analog or counter objects)
- Used Time  
(digital objects only)
- Changes  
(digital objects only)

# Provide maintenance info (1)

- Procedure for handling maintenance alarm
- Maintenance Info button in Maintenance Job Definition dialogue



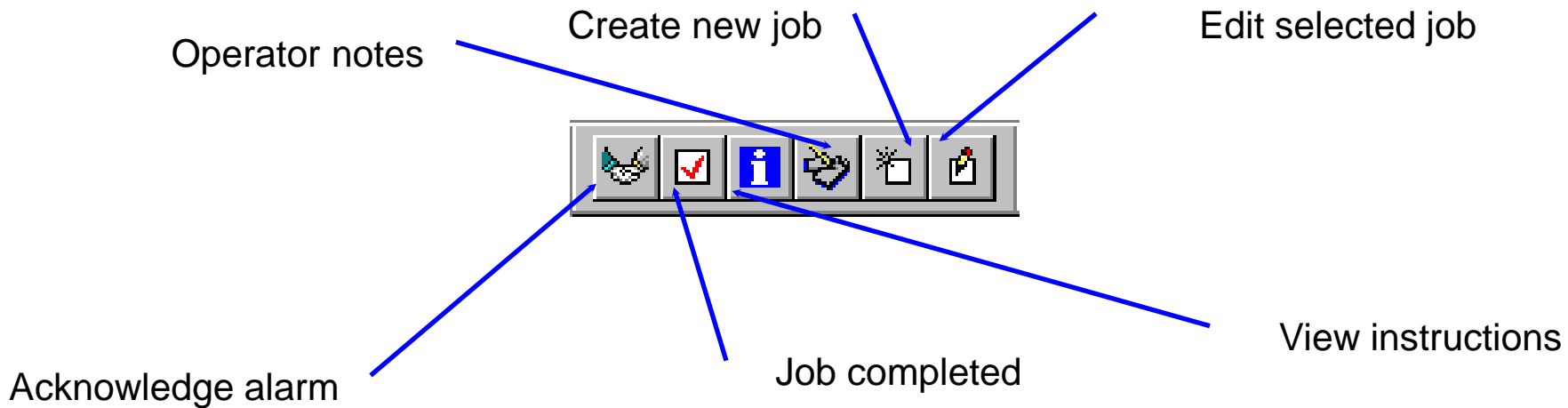
# Provide maintenance info (2)



- **Job Description tab** Operator instructions in text file
- **Job Note tab** Operator notes in text file
- **Link tab** Link to, for example, an electronic manual or video (\*.avi)
- **Help File tab** Reference to help topic with operator instructions

# Handle maintenance alarms

- Visible both in Maintenance and Alarm List
- What the operator can do



# Access Control

- Create and edit maintenance jobs  
("Can define" in User Admin.)
- Protect filters  
("Can use system commands" in User Admin.)
- Acknowledge maintenance alarms  
("Can acknowledge alarms" in User Admin.)

# Online Demo

- Create and edit maintenance jobs
- Provide operator instructions (Maintenance Info)
- Handle maintenance alarms  
(incl. Alarm List)

# Student Exercise

- Create maintenance jobs for analog and digital objects

Do Exercise 12 in the Exercises booklet