



Exercise: Create and Show Events

Purpose In this exercise you will learn how to create different types of events. The event types can be divided into three main categories:

- System events
- Periodical events
- User defined events

The events will be shown in the **Event List** which is shown just below the **Alarm List**. The list is fully user defined, so you decide yourself which events to show.

The events can be defined both from the **Definition** and **Supervise** programs.

Task 1: Create a system event In this task we will define an event to occur every time the configuration is started or stopped.

1. In the **Definition** program, open the **Edit** menu and select **Event List**.
 2. Click the **Add** button.
 3. In the **Edit Event** dialog box, do the following:
 - In the **Name** field, type `Start/stop of configuration`. This is the text that will appear in the **Event List**.
 - Under **Type**, select **System Start/stop**.
 - Select the **To history** check box to save the event in the event log.
 - Click **OK**.
-



Edit Event [?] [X]

Event

Name: Start/stop of configuration Display color: 1

Type: System start/stop Period: 1 Hours Alarm on event

First event at: 13-03-2005 17:33:42 To history

Criteria

You can edit fields directly in the list Add Criteria Delete Criteria

Object names can be typed or dragged from the object browser Object Browser

Type	Object	Atom	Relation	Object/value	Atom
------	--------	------	----------	--------------	------

Negate result of all criterias

OK Cancel



Task 2: Create a periodical event In this task we will create a monthly event which tells the operator to email a report to the municipal authorities.

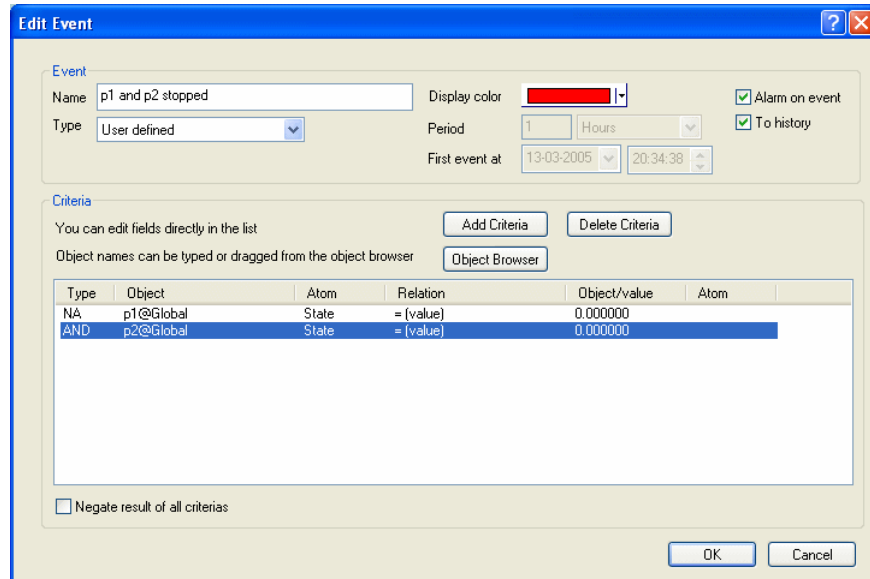
1. In the **Events** dialog box, click the **Add** button.
2. In the **Edit Event** dialog box, do the following:
 - Under **Name** type Email report to municipal authorities.
 - Under **Type** select **Periodical**.
 - Select the **Alarm on event** and **To history** check boxes. The first option will make the event appear in the **Alarm list**.
 - Under **Period** select 1 month.
 - Under **First event at** select the date of yesterday.

Task 3: Create a user defined event One of the two pumps must be running all the time to supply the tank with water. Therefore, we want an event (and an alarm) if both pumps are stopped at the same time.

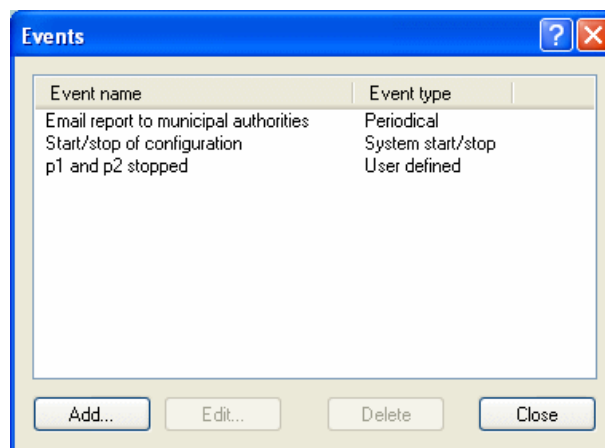
1. In the **Events** dialog box, click the **Add** button.
2. In the **Edit Event** dialog box, do the following:
 - Under **Name** type p1 and p2 stopped.
 - Under **Type** select **User defined**.



- Select the **Alarm on event** and **To history** check boxes.
- In the **Criteria** section, click the **Add Criteria** button.
- Click the **Object Browser** button and drag the object p1 to the **Object** column. Under **Atom** select **State**. Under **Relation** select **=(value)**. Under **Object/value** type 0 (corresponding to stopped).
- Repeat the previous bullet for the object p2 and under **Type** select **AND** (both criteria must be fulfilled before the event occurs).



3. Click **OK** to return to the list of events defined.



4. Click **Close** to close the dialog box.

Task 4: Test the events

We will now start the configuration and stop both pumps to trigger the user defined event.

1. In the **File** menu, select **Online Update**.



2. When the installation is completed, double-click the alarm count icon. Notice that the “Start/stop of configuration” event is now shown in the **Event List**.
3. Stop both pumps. The “p1 and p2 stopped” event now occurs in the **Event List** and alarm number 90 (alarm generated by event) appears in the **Alarm List**.

S.No.	Obj...	Alarm Num...	Alarm Text	Start Date	Start Time	Ackn...	Ackn...	End date	End Time
1	System	90	p1 and p2 stopped	13-03-2005	20:50:27.222			13-03-2005	20:50:27.222

S.No.	Start Date	Start Time	Event	Info 1	Info 2
1	13-03-2005	20:50:27.222	p1 and p2 stopped		p2
2	13-03-2005	20:47:57.747	Start/stop of configuration	Data collection started	

YOU HAVE SUCCESSFULLY COMPLETED THE EXERCISE !!