



Exercise: Creating a New Project

Purpose Learn how to create a new configuration from scratch in **System Configuration**, where we set up all the stations in the system, the global parameters and configure PLC drivers.

Duration Max. 40 minutes.

Task 1:
Create a new configuration and set up the server


Step	Action
1.	Go into the System Configuration module in the File menu chose New Configuration and the New Configuration – Name and Folder dialog appears. Key in the names and location shown in the screen dump below.
2.	Click the OK button when finished.
3.	In the Edit menu click New Station or click the New Station icon in the tool bar and the name Demo Station appears in the tree view to the left and the Station type: Server is automatically selected.
4.	Change the station name in IGSS station name: to <code>IGSS_Server</code>

Task 2:
Set up the global parameters

Now we want to set up the global parameters, which determine settings for the entire configuration. This is done on the various tabs to the right in **System Configuration**, which appear after creating a server station.

Step	Action
------	--------



1. Click on the tab **Configuration** and look in the greyed out fields to make sure you have the correct configuration loaded, i.e. the one you just created.
2. Key in the following settings:
Scan intervals (msec) 2000 5000 8000 12000
Log changes (%) 1 2 5 15
Base intervals (min) 2 5 10 20
3. On the tab **Files** make one change. Set the **Log files** save time interval up from the default **24** to 72 hours.
4. On the tab **Access Control** make one change. Make sure the checkbox **Disable access control** is checked.
5. On the tab **Alarm** make the following three changes:
Show non-ended alarm count must be checked
Enable alarm blink in list must be checked
Display system tray icon must be unchecked
6. On the tab **Reports** make the following three changes:
Under **Headings** type in the first field: `Training Plant`
and in the second field: `Training Workshop`.
Under **Report logo file** click the **Browse...** button to navigate the following path: `C:\Configuration\DemoWorldHome.bmp`, which is the graphic that will be shown when generating reports.
7. On the tab **Data Collection** make sure the first check box **Run simulated** and the check box **Validate input values against range** are checked.
8. On the tab **Startup** make sure that the two following settings are enabled: under the **Startup** group at the top left the radio button next to **Supervise** and on the right under **Auto start** the check box next to **ODBC Server**.
9. On the **Supervise & Language** tab, the following settings should be enabled:
Allow diagram move
Allow graph move and resize
Allow editing of graphs,
Enable inhibit alarms menu
Show active server name in title bar.
10. Click on the **Save** icon .

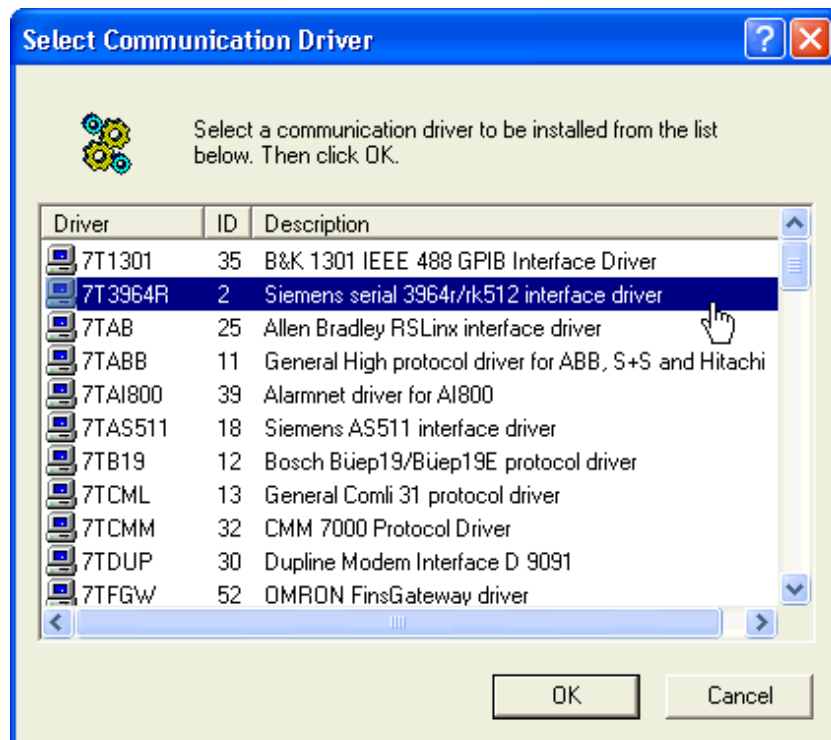


Task 3: Setting up the PLCs for the configuration

We continue with setting up the PLC drivers for our configuration. The IGSS server must know to which PLCs it must communicate.

Step Action

1. Click the menu **Edit – New Driver** or the icon in the tool bar to select a PLC driver and the **Select Communication Driver** dialog box appears.



2. Select the driver **7T3964R** from the list as shown above and click **OK** and new tabs are displayed on the right.
3. Click on the tab **Advanced** and change only one setting: under **Activation Condition** remove the check mark in **Single user backup**.
4. Click on the **Save** icon.
6. Click **Edit – New Interface** or the icon on the tool bar and the interface type, **Com1:**, is automatically inserted under the driver name in the tree view and new tabs appear on the right.



7. On the tab Serial Port, change the following settings:
Select Communications port: set to **COM2:** and **Baud Rate:** set to **4800.**
8. On the **Remote** tab, it isn't possible to change settings because we didn't choose a modem connection on the tab **Connection Type.**
9. Click the **COM2** name in the tree and the **Node** name appears underneath.
10. Highlight the **Node** name and new tabs appear on the right.
11. On the **Node Properties** tab we don't make any changes.
12. Click the **Advanced** tab and the sub tabs under **Advanced Node Properties** are displayed.
13. Click on the first tab, **Mailbox**, and put a check mark in **Setup a Mailbox Address in this node** and then key in the following:
Datagroup for mailbox: 10
Start offset for mailbox: 2
Mailbox length (in WORDS): 4
14. Click the tab System Events and put a check mark in both check boxes. In **Minimum alarm priority to be sent** choose **10** and in **Maximum alarm priority to be sent** choose **50.**
15. On the tab Keep Alive Services we check mark both check boxes and in the first **Time interval (minutes):** we select **2** and in the second we select **1.**
16. Click on the name **Node** in the tree view to highlight it and then add a subnode by clicking on the menu **Edit – New Subnode** or the icon and the name **SubNode** comes into the tree view at the same time that a new tab appears on the right, **Subnode Properties.**
17. On **Subnode Properties** change only one setting by putting a check mark beside **Keep Alive PLC→PC** and choosing the **Time interval (minutes): 2**
18. Click on the **Save** icon.

Task 4:
Setting up the
operator stations

Now we want to setup operator stations, which is a task also accomplished in the **System Configuration** module.

Step	Action



1. *NOTE:* Click the menu **Edit – New Station** or the icon in the tool bar and a new station with the default name **StationA** appears in the tree view.
2. Begin by renaming the station from **StationA** to **OP1**.
3. On the tab **Station** all the way at the bottom under **Notes** key in Operator station at Plant 1, section 1.
4. On the tab **Server & Backup** we don't enter any changes or parameters. (Note: In a real life scenario, you would key in the server name or IP address of the IGSS server to connect to.)
5. *NOTE:* On the tab **Startup** there is one setting we want to select - the radio button **Manual** at the top left. No other parameters should be selected.
6. On the **Supervise** tab select the **Show active server name in title bar**. Check box.
7. On the **Alarm** tab, keep the default settings.
8. On the **File** menu chose **Save and Start Definition...**and then await further instructions form the instructor.

YOU HAVE SUCCESSFULLY COMPLETED THE EXERCISE !!