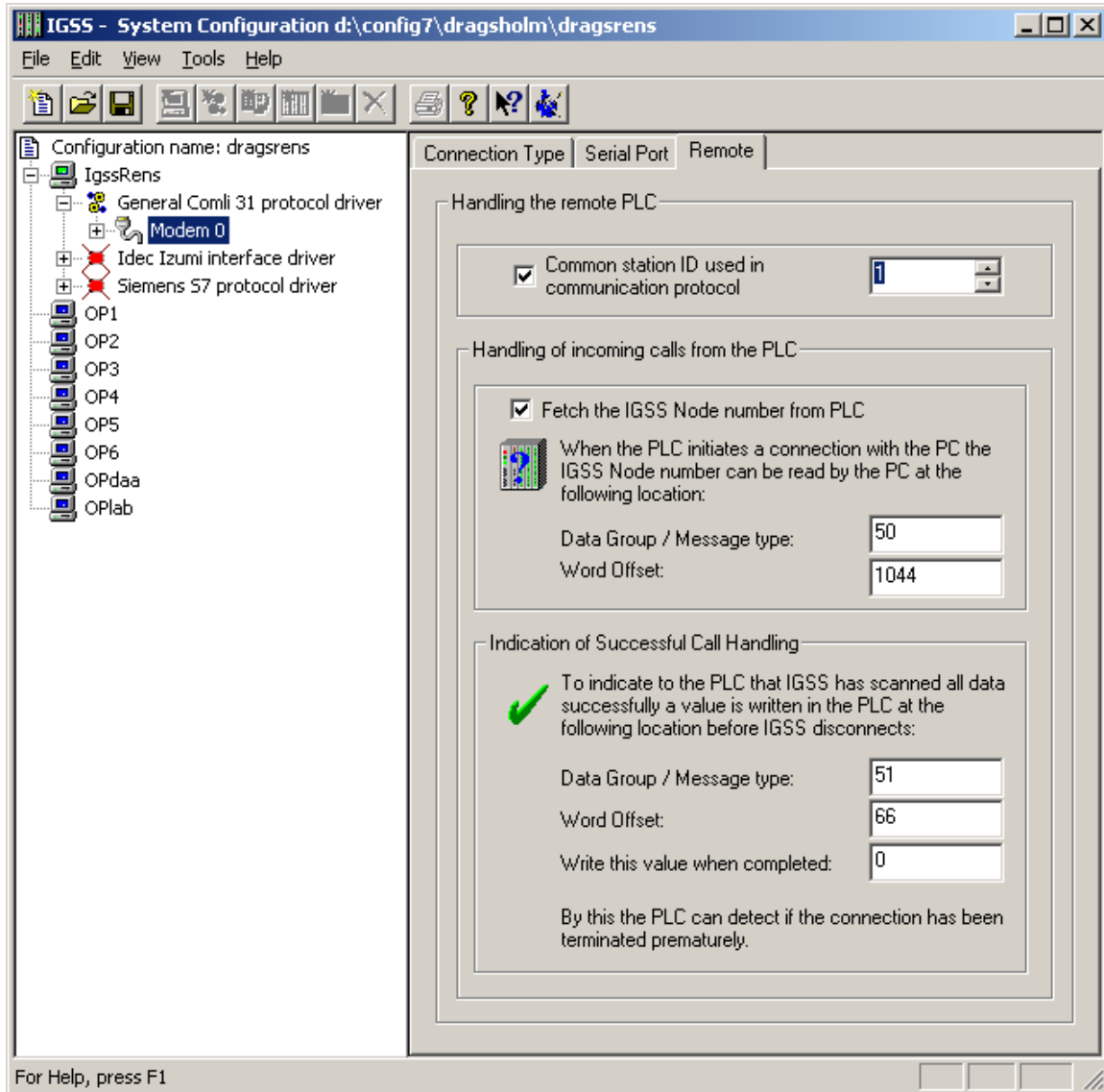


# **IGSS Setup for MJK Data Transmitter 795**



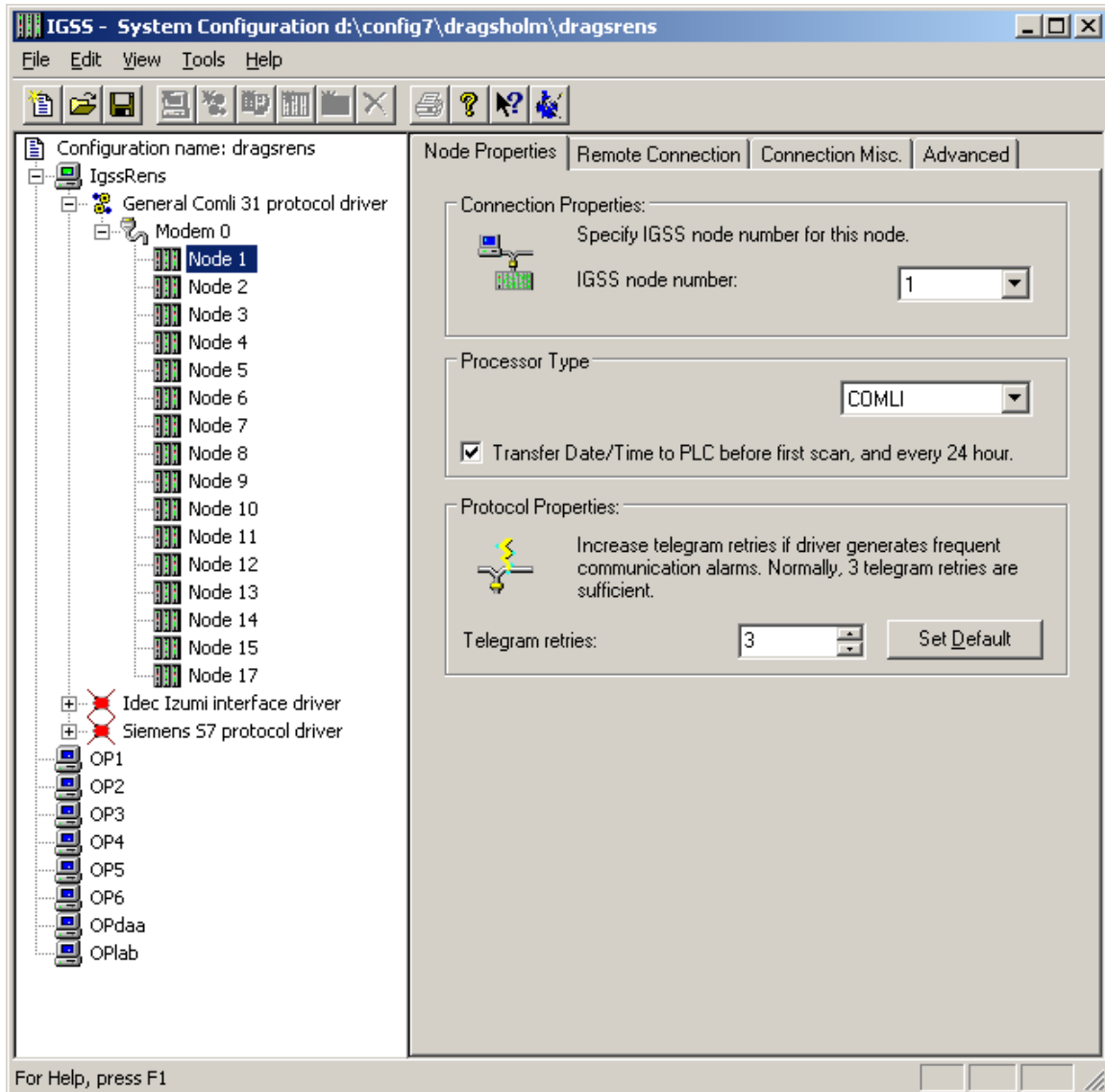
## Remote

Fælles parameter for alle noder



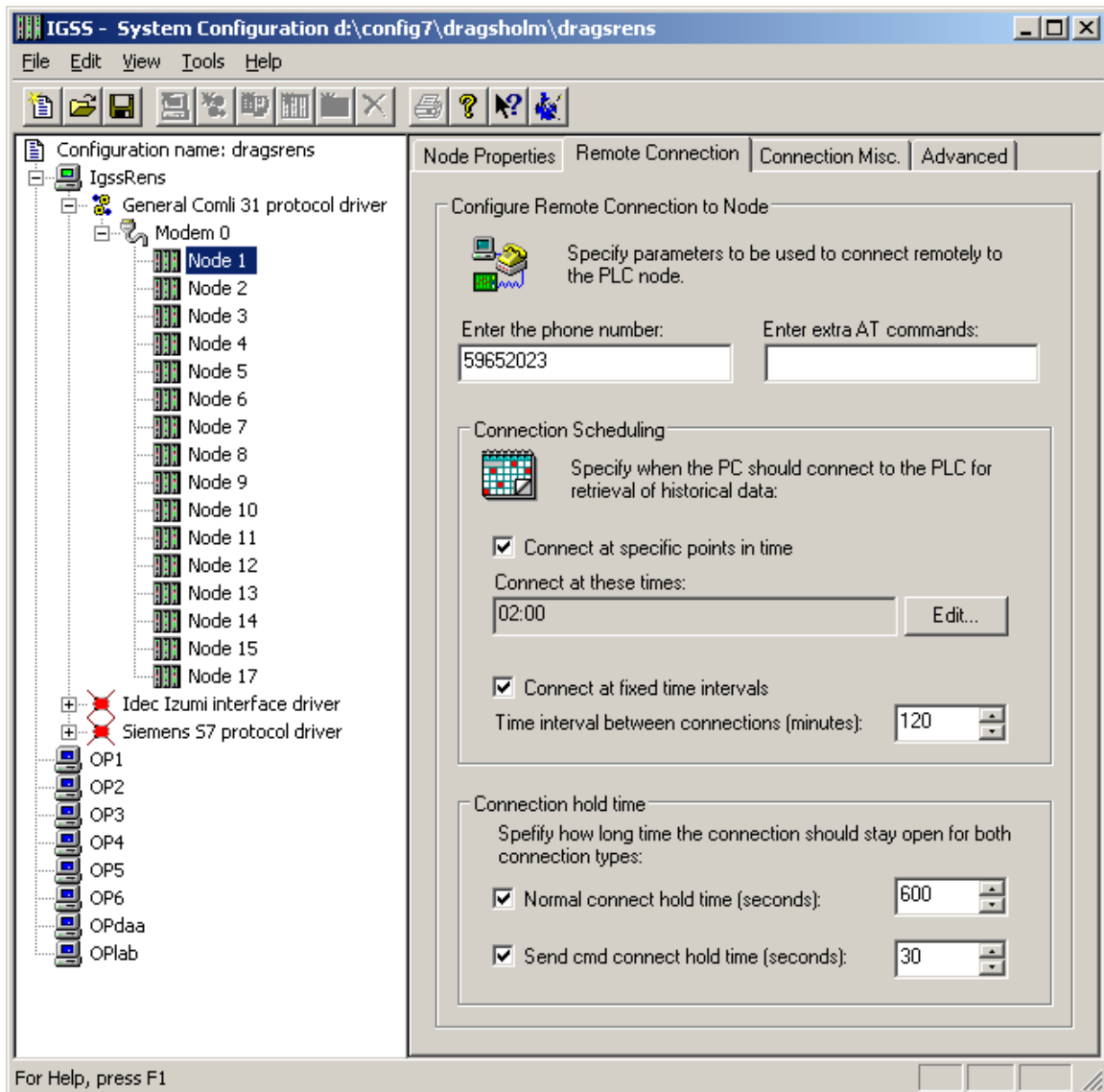
## Node Properties

Processor type skal være COMLI for ikke extended logs, og MJK\_EXTENDED for extended logs.



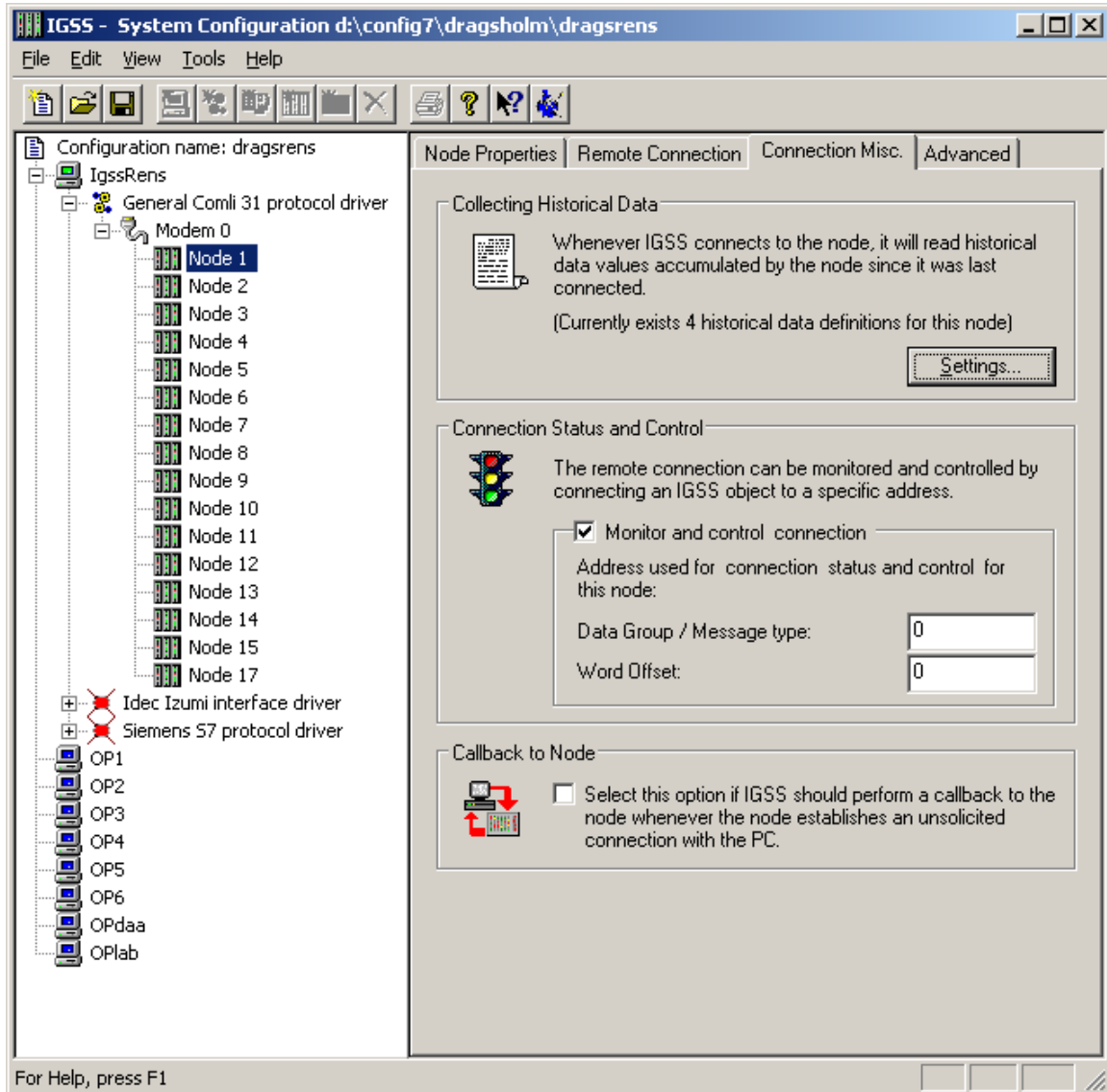
## Remote Connection

Der er af betydning at "Send cmd connect hold time" ikke er så stor at det forsinket et evt. VBA program i at kalde flere stationer i hurtig rækkefølge.



## Connection Misc.

Connection Status and Control: Data group og Word Offset vælges typisk som 0,0. Disse værdier skal modsvare Message type og Offset på dialup objektet.



Opkald\_0012 @ LANDKORT

Alarm In/Ack Bit    Command/State Config    Data Management Definitions    Display

Change State    Bit Map I/O

Edit Mapping    Calculation    Report Format    Symbol Definition

Atom

- Command
- State
- Free Value
- Alarm-In
- Alarm-Out

I/O mode :    out

Alarm Details

[Dropdown]

New    Edit    Delete

PLC Node for object: Opkald\_0012

Driver :    7TCML (IgssRens)

Ngde :    12

PLC Address for Command atom:

Message Type    00 LocalDB

Offset:    0

Register:    0

Bit Offset    0

External type    FP16S

Use numeric +/- to scroll to next/previous atom

OK    Cancel    Help

## Historical Data Settings

Første log kanal vist her aflevere data til et ikke scannet objekt med PLC adresse:

00 LocalDB Offset 1. Data størrelse er et 1 WORD (16 bit) og har extern type SATTR16.

Der logges med 5 minutters interval og max antal af logs i kanalen er 288.

**Historical Data Settings for Node 1** [?] [X]

Historical Data Settings

The first two columns define the IGSS address into which the historical data should be mapped. The third column is value size in words. The remaining columns define the layout of the historical data in the node.

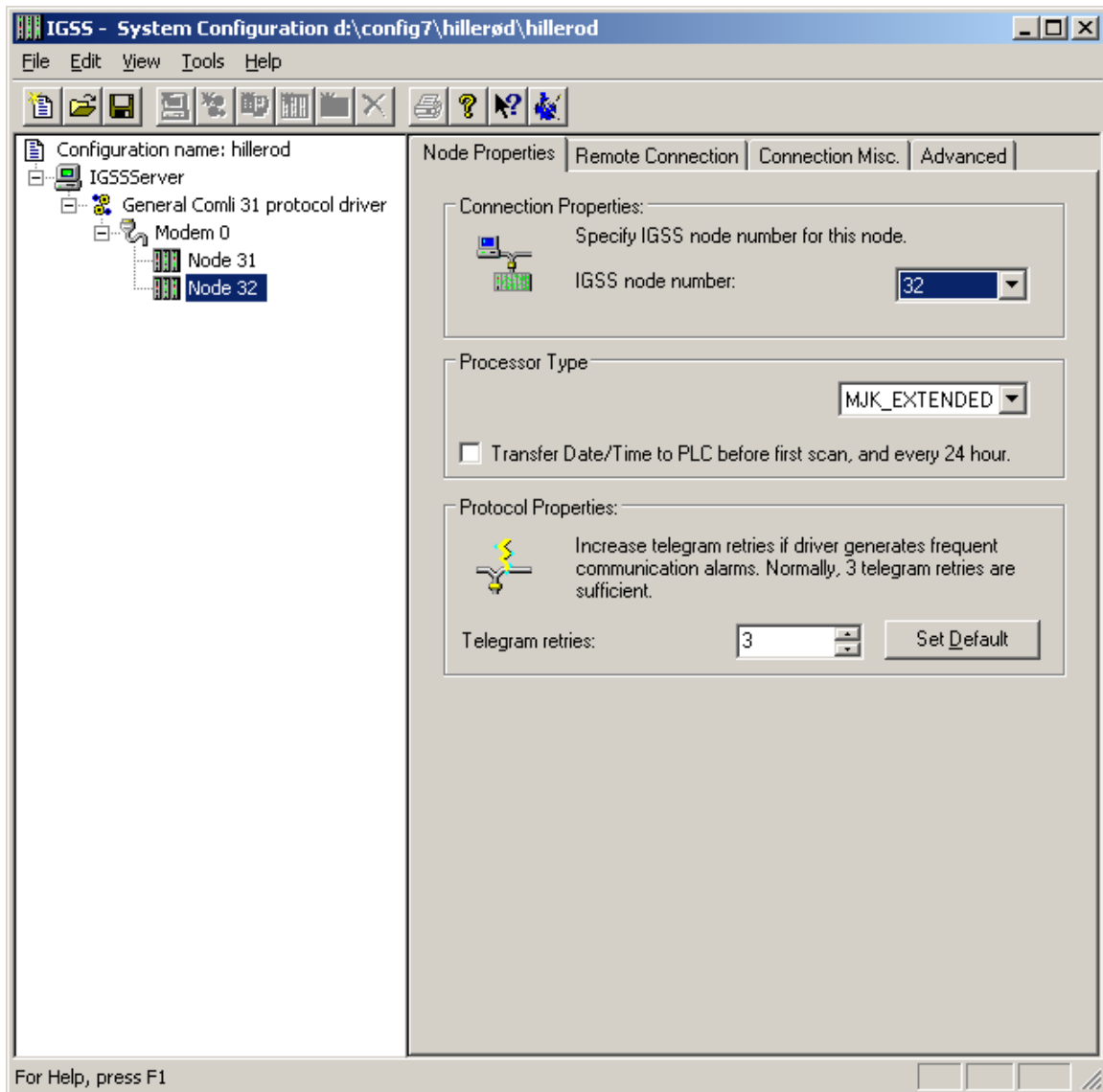
MJK Specific: If zero, Read Code is set to 50. If zero, the Interval will be obtained from the 795.

Data Group	Word Offset	Word Length	Read Code	Start Addr.	Interval	Count	Bias
0	1	1	50	1312	5	288	1
0	2	1	50	1600	5	288	1
0	3	1	50	1888	5	288	1
0	5	1	50	2464	5	288	1

(Rows painted in red contains invalid values and will not be saved)

[Import from file...] [Clear row] [OK] [Cancel]

MJK\_EXTENDED vælges når man ønsker at bruge MJK 795's større log kapacitet.





Start adresserne for de extended log kanaler er vist nedenfor.

704 niveau            woffs 13312  
analog indgang 1   woffs 17408  
analog indgang 2   woffs 21504  
analog indgang 3   woffs 25600  
analog indgang 4   woffs 29696

Historical Data Settings for Node 32

Historical Data Settings

The first two columns define the IGSS address into which the historical data should be mapped. The third column is value size in words. The remaining columns define the layout of the historical data in the node.

MJK Specific: If zero, Read Code is set to 50. If zero, the Interval will be obtained from the 795.

Data Group	Word Offset	Word Length	Read Code	Start Addr.	Interval	Count	Bias
0	1	1	50	17408	5	288	1
0	2	1	50	21504	5	288	1
0	3	1	50	25600	5	288	1
0	4	1	50	19696	5	288	1

(Rows painted in red contains invalid values and will not be saved)

Clear row

Import from file... OK Cancel